

Model 651555-B REVERSIBLE SPRAY NOZZLE



**READ THIS MANUAL CAREFULLY BEFORE INSTALLING,
OPERATING OR SERVICING THIS EQUIPMENT.**

It is the responsibility of the employer to place this information in the hands of the operator. Keep for future reference.

MAXIMUM WORKING PRESSURE 3000 P.S.I. (206.9 BAR)

GENERAL DESCRIPTION

The 651555-B reversible spray nozzle is a self-cleaning spray nozzle. Turn the handle 180° and the flow of material is reversed through the tip, flushing it clean.

NOTE: The spray tip assembly (TC XXXX-D) is not included with the unit. This assembly should be ordered separately, indicating size and angle required (see figure 1, page 2). Be sure to include the "-D" for reversible spray nozzles.

Example in ordering:

TC 2140-D spray tip assembly would indicate tip size (0.021" dia. orifice x 40° angle). To determine tip sizes available, see catalog.

INSTALLATION

1. Rotate (3) handle until the threaded end of (9) ball bore is visible from the front of the unit.
2. Insert the (17a) spray tip into (9) ball.
3. Thread the (17b) retainer into the cylinder, using a 1/8" Allen wrench to secure the spray tip. Do not tighten the (17b) retainer.
4. Rotate (3) handle until the (17a) spray tip is visible from the front of the unit.
5. Place the proper end of the alignment tool (included with spray tip) over the flat of the (17a) spray tip and rotate the "V" groove of the spray tip to the desired location.
6. Rotate (3) handle until the threaded end with the (17b) retainer is visible again from the front of the unit.
7. Tighten the (17b) retainer using a 1/8" Allen wrench.
8. Place (16) nylon gasket inside the (14) swivel nut.
9. Attach the 651555-B reversible spray nozzle securely to a control handle by threading the (14) swivel nut to the head of the control handle.
10. Rotate (3) handle until the (17a) spray tip is visible from the front of the unit. The unit is now ready for operation.



(Handle shown in spray position)

OPERATING AND SAFETY PRECAUTIONS

⚠ WARNING PREVENT STATIC SPARKING. If static sparking occurs, fire or explosion could result. Pump, spray gun and containers must be grounded when handling flammable fluids such as solvents, paints, lacquers, etc. and wherever discharge of electricity is a hazard.

⚠ CAUTION Do not aim the spray nozzle at any part of the body at any time.

⚠ CAUTION For your protection, the safety ear must always be used.

⚠ CAUTION The material being pumped is under high pressure. Do not attempt to service any part of the material system before relieving all pressure.

⚠ CAUTION For cleaning, use the solvent with the highest flash point that is compatible with the material being used, and follow safety procedures.

⚠ CAUTION When pumping, flushing or recirculating volatile solvents, the area must be adequately ventilated.

⚠ CAUTION Keep solvents away from heat, sparks and open flames. Keep container closed when not in use.

MAINTENANCE

To “clean up”, simply spray solvent through the 651555-B reversible spray nozzle. Also, wipe off the exterior. However, for a major “clean up” or flushing of the spray nozzle:

1. Relieve all pressure in the system and pull the trigger on the gun to make sure all pressure is relieved.
2. Place the gun safety lock in the closed position and remove the spray tip from the gun. Place the tip in a small container of solvent for

soaking and final cleaning. Use a soft bristle brush to remove any material collection by using air blow gun applied to the outlet of the orifice at the front of the tip and blowing back through the rear of the tip. If the obstruction in the spray tip will not blow out, do not dislodge material with a wire. **Never attempt to clean the tip while it is attached to the spray gun.**

PARTS LIST / 651555-B SPRAY NOZZLE

Item	Description (size in inches)	Qty	Part No.
1	Nut	(1)	90284
2	Nut Washer	(1)	90285
3	Handle	(1)	90286
4	Washer	(1)	90067
5	Tip Guard	(1)	90283
6	Body	(1)	90287
7	Drive Shank Washer	(1)	90069
8	Drive Shank	(1)	90335
9	Ball	(1)	90355
10	Ball Gasket	(1)	90217
11	Nu-Lip Seal	(1)	90070
12	Lock Nut	(1)	90356
13	Seal Retainer	(1)	90360

Item	Description (size in inches)	Qty	Part No.
14	Swivel Nut (11/16" - 16 UN)	(1)	90361
15	Connecting Piece	(1)	90362
16	Gasket	(1)	90427
17	Spray Tip Ass'y (includes 17a - 17c)	(1)	TC XXXX-D
17a	Spray Tip	(1)	
17b	Retainer	(1)	
17c	Alignment Tool (not shown)	(1)	
18	1/8" Allen Wrench (not shown)	(1)	
	Items included in Service Kit	(1)	637108
	Cancelled items		

■ Not included. Must be ordered separately.

NOTE: Only “-D” tip numbers are for use with reversible spray nozzles.

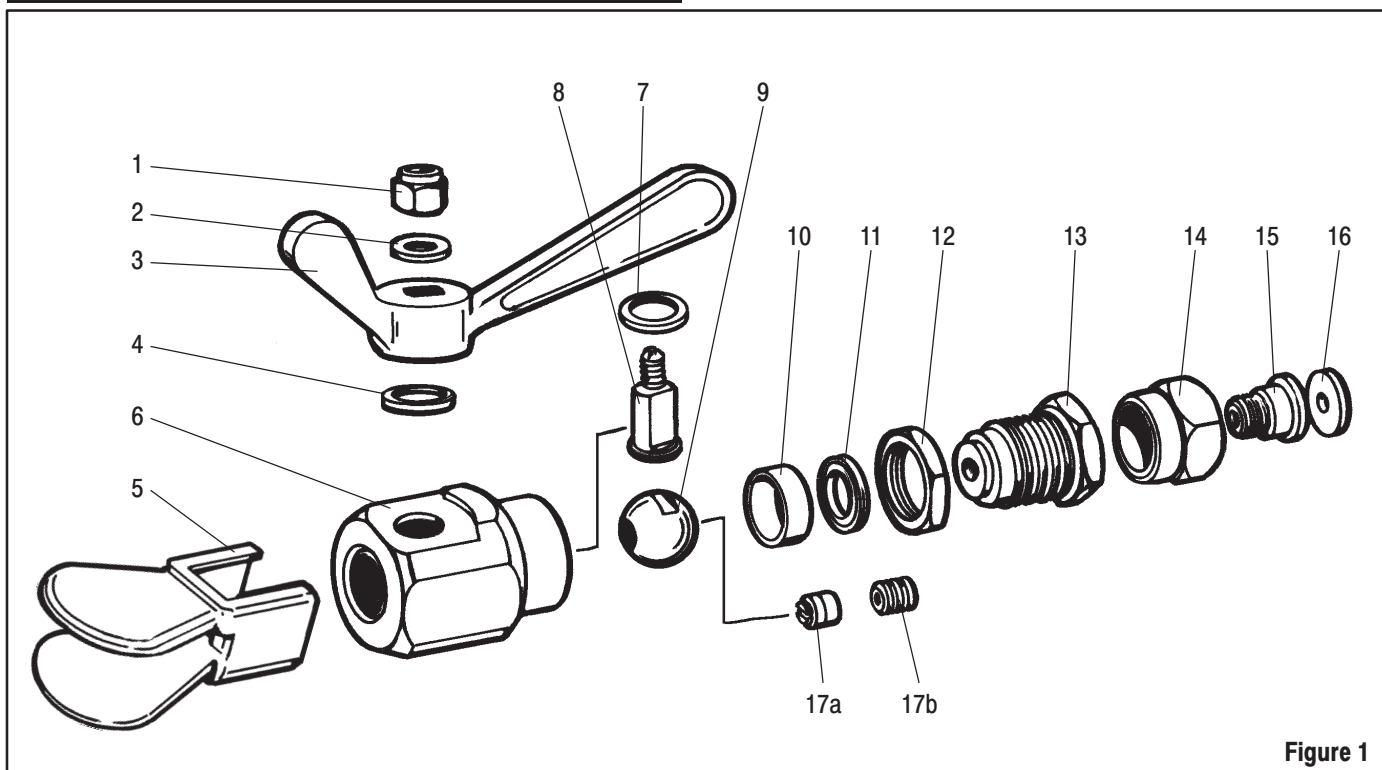


Figure 1